

# Spatial Tactile Brain-Computer Interface Paradigm Applying Vibration Stimuli to Large Areas of User's Back

Takumi Kodama<sup>1,\*</sup>, Shoji Makino<sup>1,\*</sup> and Tomasz M. Rutkowski<sup>1,2,\*</sup>,<sup>†</sup>

<sup>1</sup> Life Science Center of TARA, University of Tsukuba, Tsukuba, Japan

<sup>2</sup> RIKEN Brain Science Institute, Wako-shi, Japan

tomek@bci-lab.info

<http://bci-lab.info>

## Abstract

We aim at an augmentation of communication abilities of *locked-in syndrome* (LIS) patients by creating a *brain-computer interface* (BCI) which can control a computer or other device by using only brain activity. As a method, we use a stimulus-driven BCI based on vibration stimuli delivered via a gaming pad to the user's back. We identify P300 responses from brain activity data in response to the vibration stimuli. The user's intentions are classified according to the P300 responses recorded in the EEG. From the results of the psychophysical and online BCI experiments, we are able to classify successfully the P300 responses, which proves the effectiveness of the proposed method.

## 1 Introduction

Recently, vibrotactile-based somatosensory modality BCIs have gained in popularity [1, 4, 2]. We propose an alternative tactile BCI which uses P300 brain responses to a somatosensory stimulation delivered to larger areas of the user's back, defined as a back-tactile BCI (btBCI). We conduct experiments by applying vibration stimuli to the user's back, which allows us to stimulate places at larger distances on the body in order to test our hypothesis of the full body-based tactile BCI paradigm validity. The stimulated back areas are both shoulders, the waist and the hips. In order to do so, we utilize a haptic gaming pad "ZEUS VYBE" by Disney & Comfort Research. An audio signal pad's input allows for the delivery of a sound pattern activating spatial tactile patterns of vibrotactile transducers embedded within the device. In the experiments reported in this paper, the users lay down on the gaming pad and interacted with tactile stimulus patterns delivered in an oddball-style paradigm to their backs, as shown in Figure 1. The reason for using the horizontal position of the gaming pad, developed for a seated setting, is that bedridden users, with intact afferent neural fibers [5], could easily utilize it and it could also serve as a muscle massage preventing the formation of bedsores.

## 2 Methods

In the research project reported in this paper the psychophysical and online EEG experiments were carried out with able-bodied, BCI-naive users. Seven healthy users participated in the study (three males and four females) with a mean age of 25 years (standard deviation of 7.8 years). The users were paid for their participation. All the experiments were performed at the Life Science Center of

---

\*The author was supported in part by the Strategic Information and Communications R&D Promotion Program no. 121803027 of The Ministry of Internal Affairs and Communications in Japan.

<sup>†</sup>The corresponding author.



Figure 1: A btBCI user lying on the gaming pad as in the experiments reported in this paper. The g.USBamp by g.tec with g.LADYbird electrodes is also depicted. The photograph is included with the user’s permission.

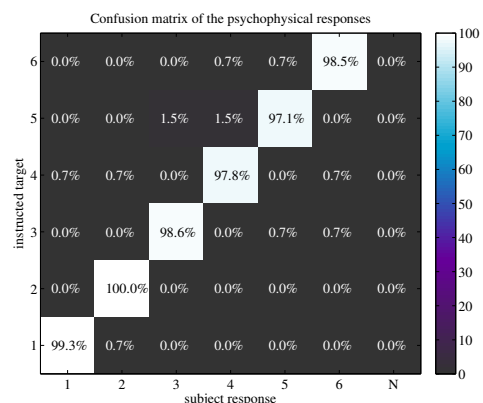


Figure 2: Psychophysical experiment grand mean averaged accuracies with scores above 97% for each of the six commands. “N” stands for no-response cases.

TARA, University of Tsukuba, Japan. The procedures for the psychophysical experiments and EEG recordings for the BCI paradigm were approved by the Ethical Committee of the Faculty of Engineering, Information and Systems at the University of Tsukuba, Tsukuba, Japan. Each participant signed to give informed consent to taking part in the experiments. The psychophysical experiments were conducted to investigate the recognition accuracy and response times to the stimuli delivered from the gaming

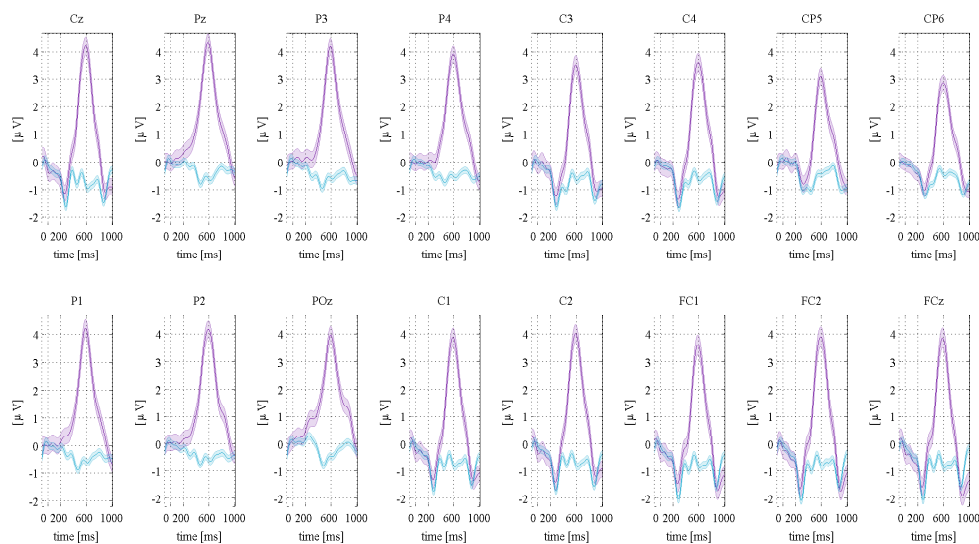


Figure 3: Grand mean averaged ERP for target (purple line) and non-target (blue line) stimuli. The very clear P300 responses are easy to notice for each EEG electrode in the latencies of 200 ~ 1000 ms. Eye blink contaminated ERPs were rejected in the process of creation of this figure, with a threshold of 80  $\mu V$ .

pad. The behavioral responses were collected as keyboard button presses after instructed targets. In the psychophysical experiment, each single trial was comprised of a randomly presented single target and five non-target vibrotactile stimuli (120-targets and 600-non-targets in a single session). The stimulus duration was set to 300 ms and the inter-stimulus-interval (ISI) to 700 ms. In the btBCI online experiments, the EEG signals were captured with a bio-signal amplifier system g.USBamp by g.tec Medical Instruments, Austria. Active EEG electrodes were attached to the sixteen locations *Cz, Pz, P3, P4, C3, C4, CP5, CP6, P1, P2, POz, C1, C2, FC1, FC2 and FCz*, as in 10/10 international system. A reference electrode was attached to the left mastoid, and a ground electrode to the forehead at the *FPz* position. The EEG signals were captured and classified by BCI2000 software [6] using a stepwise linear discriminant analysis (SWLDA) classifier [3] applied to sixteen times downsampled 0 ~ 800 ms ERP latencies. The EEG recording sampling rate was set at 512 Hz, and the high and low pass filters were set at 0.1 Hz and 60 Hz, respectively. The notch filter to remove power line interference was set for a rejection band of 48 ~ 52 Hz. In each trial, the stimulus duration was set to 250 ms and the ISI to random values in a range of 350 ~ 370 ms in order to break rhythmic patterns of presentation. Each online experiment comprised of 10 trials used for epochs averaging. Users conducted three runs of which the first one was used for SWLDA classifiers truing and the remaining for testing. The vibrotactile spatial pattern stimuli (stimulated body locations used as cues) in the two experimental settings above were generated using the same *MAX 6* program, and the trigger onsets were generated by *BCI2000* EEG acquisition and ERP classification software [6]. During the training run the cues were given in form of vibrations of the target location before each sequence. In testing phase the spelled digits (representing the body locations) were given visually on a computer display.

### 3 Results

The psychophysical experiment results are summarized in the form of a confusion matrix depicted in Figure 2, where the behavioral response accuracies to instructed targets and marginal errors are depicted together with no-response errors, which were not observed with the users participating in our experiments. The grand mean behavioral accuracies were above 97%, which proved the easiness of the back vibrotactile stimuli discrimination. The behavioral response times did not differ significantly among classes as tested with the Wilcoxon rank sum test for medians, which further supported the choice of the experiment set-up with vibrotactile stimuli to the back. The EEG experiment results are summarized in Figures 3 and 4 in the form of grand mean averaged ERPs and classification accuracies. The grand mean averaged ERPs resulted in very clear P300 responses in latency ranges of 200 ~ 1000 ms. The SWLDA classification results in online btBCI experiments of six digit spelling are shown in Figure 4, depicting each user's averaged scores in a range of 16.7% ~ 62.45% and the best grand mean results in the range of 57.26% ~ 85.71%, both as a function of various ERP averaging scenarios. The chance level was 16.7%. The best mean scores show very promising patterns for possible improvements based on longer user training. Mean information-transfer-rates ranged from 0.6 bit/min to 3.3 bit/min for 10-trials averaging based SWLDA classification to 0.5 bit/min to 10.9 bit/min for single trial offline analysis cases.

### 4 Conclusions

This paper reports results obtained with a novel six-command-based btBCI prototype developed and evaluated in experiments with seven BCI-naive users. The experiment results obtained in this study confirm the general validity of the btBCI for six command-based applications and the possibility to further improve the results, as illuminated by the best mean accuracies achieved by the users. The EEG

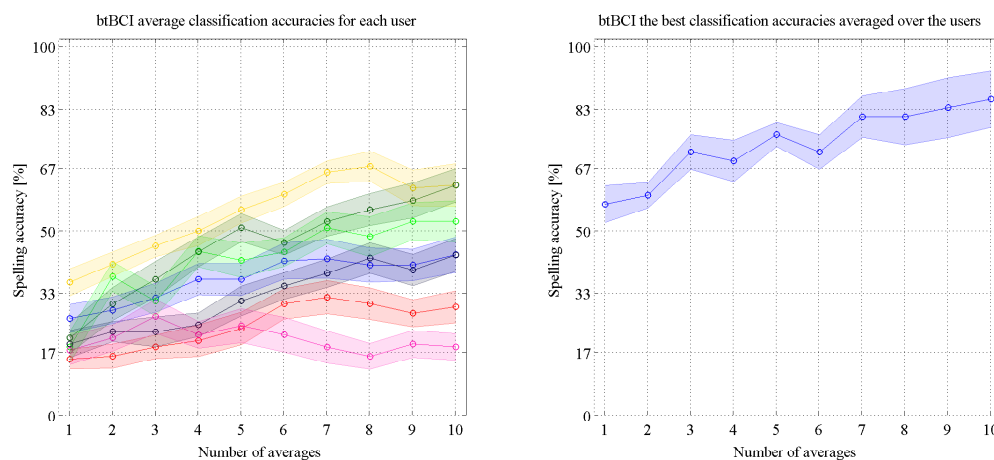


Figure 4: The averaged btBCI accuracies as obtained with a SWLDA classifier with different numbers of averaged ERPs. The left panel presents mean accuracies for each user separately, together with standard error bars calculated over different runs. The right panel presents the averaged maximum scores (the best runs) of all the users together in order to illustrate the potential strength of the paradigm in comparison to average scores shown in the left graph.

experiment with the prototype confirms that tactile stimuli to large areas of the back can be used to spell six-digit (command) sequences. The results presented offer a step forward in the development of somatosensory modality neurotechnology applications. Due to the still not very satisfactory interfacing rate achieved in the case of the online btBCI, the current prototype obviously requires improvements and modifications. These requirements will determine the major lines of study for future research. However, even in its current form, the proposed btBCI can be regarded as a possible alternative solution for locked-in syndrome patients, who cannot use vision or auditory based interfaces due to sensory or other disabilities.

## References

- [1] A-M. Brouwer and J.B.F. Van Erp. A tactile P300 brain-computer interface. *Frontiers in Neuroscience*, 4(19), 2010.
- [2] J.E. Huggins, C. Guger, B. Allison, C.W. Anderson, A. Batista, A-M. Brouwer, C. Brunner, R. Chavarriaga, M. Fried-Oken, A. Gunduz, D. Gupta, A. Kübler, R. Leeb, F. Lotte, L.E. Miller, G. Müller-Putz, T. Rutkowski, M. Tangermann, and D.E. Thompson. Workshops of the fifth international brain-computer interface meeting: Defining the future. *Brain-Computer Interfaces*, 1(1):27–49, 2014.
- [3] D.J. Krusienski, E.W. Sellers, F. Cabestaing, S. Bayouduh, D.J. McFarland, T.M. Vaughan, and J.R. Wolpaw. A comparison of classification techniques for the P300 speller. *Journal of Neural Engineering*, 3(4):299, 2006.
- [4] H. Mori, Y. Matsumoto, Z.R. Struzik, K. Mori, S. Makino, D. Mandic, and T.M. Rutkowski. Multi-command tactile and auditory brain computer interface based on head position stimulation. In *Proceedings of the Fifth International Brain-Computer Interface Meeting 2013*, page Article ID: 095, Asilomar Conference Center, Pacific Grove, CA USA, June 3-7, 2013. Graz University of Technology Publishing House, Austria.
- [5] J R Patterson and M Grabois. Locked-in syndrome: a review of 139 cases. *Stroke*, 17(4):758–64, 1986.
- [6] G. Schalk and J. Mellinger. *A Practical Guide to Brain-Computer Interfacing with BCI2000*. Springer-Verlag London Limited, 2010.