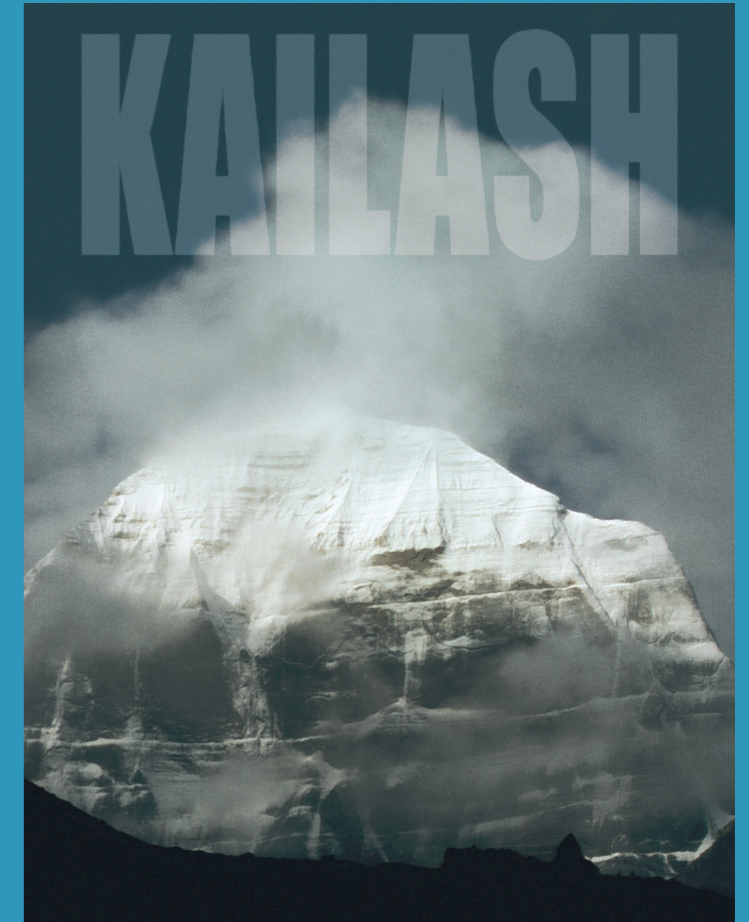


# KAILASH 1:50 000

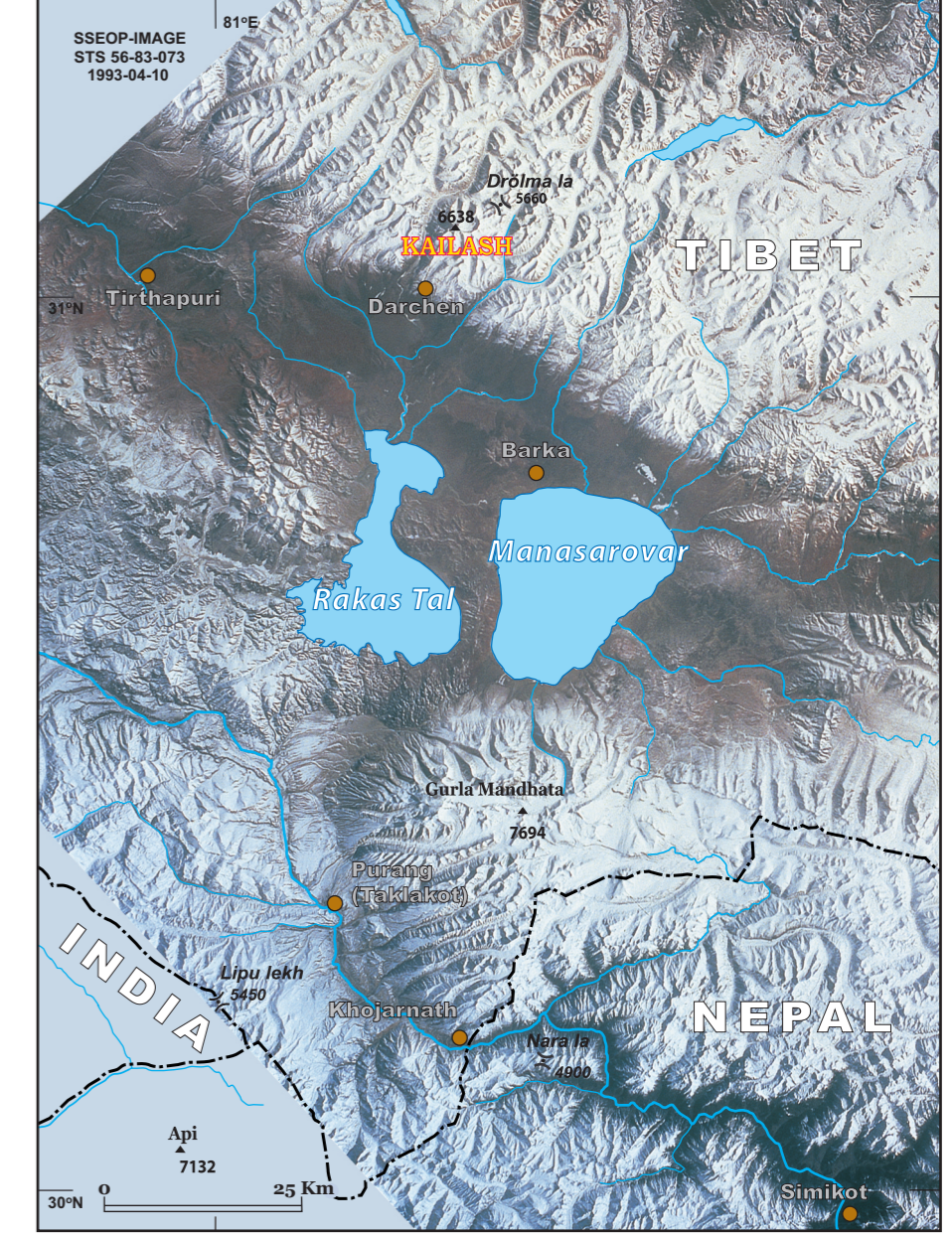


# གངས་རིན་པོ་ཆེ་



**MAP OF THE HOLIEST MOUNTAIN  
IN THE WORLD**

## SACRED REGION KAILASH-MANASAROVAR



## LEGEND

	Glacier, snow, ice September 23, 2000		Footprint
	Barren land, rocks, gravel		Cave
	Pasture land		Road, track
	Lake		Footpath, trail
	River		Kailash circumambulation
	Monastery		Pass
	Building		Bridge
	Chöten, sacred site, stone		Contourline (500m, 100m)
	Place of prostration		Peak, spot (height in meters)

## IMPRINT

**Conception:** Robert Kostka  
**Geodetic Reference:** Available maps and GPS-data  
**Image Base:** NASA-LANDSAT 7 and CORONA satellite images, not system- and relief corrected  
**Height reference:** Available maps and barometric measurements  
**Fieldwork:** Katia Buffetrille, 1990, 1996  
 Robert Kostka, 1998  
**Names:** Katia Buffetrille  
**Cartographic draft:** Katia Buffetrille, Robert Kostka  
**Cartography:** Heinz Krottendorfer  
**Prepress operator:** Peter Fiala  
**Print:** Novoprint Rt., Hungary  
**Sponsored by:** Österreichische Nationalbank, Jubiläumsfonds, Vienna

© Robert Kostka, Cartoconsult Austria, Graz, first edition 2002